

## **Installation and Configuration Guide**

**CUSTOMER**

Enterprise Controlling Consolidation (EC-CS), Business  
Consolidation (SEM-BCS)

Document Version: 1.2 – 2014-01-28

# **SAP Interactive Excel 3.0**

**Enhancement Package 5 for SAP ERP 6.0 and later**



# Typographic Conventions

Type Style	Description
<i>Example</i>	Words or characters quoted from the screen. These include field names, screen titles, pushbuttons labels, menu names, menu paths, and menu options. Textual cross-references to other documents.
<b>Example</b>	Emphasized words or expressions.
EXAMPLE	Technical names of system objects. These include report names, program names, transaction codes, table names, and key concepts of a programming language when they are surrounded by body text, for example, SELECT and INCLUDE.
Example	Output on the screen. This includes file and directory names and their paths, messages, names of variables and parameters, source text, and names of installation, upgrade and database tools.
<b>Example</b>	Exact user entry. These are words or characters that you enter in the system exactly as they appear in the documentation.
<Example>	Variable user entry. Angle brackets indicate that you replace these words and characters with appropriate entries to make entries in the system.
EXAMPLE	Keys on the keyboard, for example, F2 or ENTER.

# Document History

Version	Date	Change
1.0	2013-05-21	Initial version
1.1	2013-07-08	<p>The following chapters were added:</p> <ul style="list-style-type: none"><li>• 4 Using SAP Interactive Excel for the First Time</li><li>• 5 Uninstalling SAP Interactive Excel</li></ul> <p>Chapter 9 Security Information provides additional information in the introductory paragraph and under <i>Security and Protection</i>.</p>
1.2	2014-01-28	<ul style="list-style-type: none"><li>• In Introduction, the following sentence was added: <i>The backend services for SEM-BCS are available as of Enhancement Package 5 for SAP ERP 6.0, support package 13.</i></li><li>• In Prerequisites for First-Time Installation under <i>Software Requirements</i>, additional information related to downloading Microsoft Visual Studio 2010 Tools for Office Runtime, version 4.0 was added.</li><li>• In Creating Trace Files, step 5: <i>Archive the yyyyymmdd_hhmmss_file.trc files in the same folder</i> was added.</li></ul>

---

# Table of Contents

<b>1</b>	<b>Introduction .....</b>	<b>5</b>
<b>2</b>	<b>Prerequisites for First-Time Installation.....</b>	<b>6</b>
<b>3</b>	<b>Installing SAP Interactive Excel for EC-CS and SEM-BCS.....</b>	<b>9</b>
<b>4</b>	<b>Using SAP Interactive Excel for the First Time .....</b>	<b>10</b>
<b>5</b>	<b>Uninstalling SAP Interactive Excel .....</b>	<b>12</b>
<b>6</b>	<b>Logging On to a System from SAP Interactive Excel .....</b>	<b>13</b>
<b>7</b>	<b>Creating Trace Files .....</b>	<b>14</b>
<b>8</b>	<b>Default Configuration of SAP Interactive Excel EC-CS/SEM-BCS .....</b>	<b>15</b>
<b>9</b>	<b>Security Information.....</b>	<b>16</b>

---

# 1 Introduction

This document describes the basic steps that are necessary for successful installation and first-time use of SAP Interactive Excel, version 3.0.

SAP Interactive Excel is an add-in application for Microsoft Excel that enables users to enter reported financial data of consolidation units in user-defined matrices and save this data to the backend consolidation component directly from a Microsoft Excel spreadsheet. The SAP Interactive Excel tool is available for *Enterprise Controlling Consolidation* (EC-CS) (based on SAP R/3) and *Business Consolidation* (SEM-BCS) (based on SAP NetWeaver Business Warehouse).

Data entry in SAP Interactive Excel requires the backend services that are available in earlier releases of EC-CS. The backend services for SEM-BCS are available as of Enhancement Package 5 for SAP ERP 6.0, support package 13.

## 2 Prerequisites for First-Time Installation

SAP Interactive Excel is an add-on for the Microsoft Excel application that can be installed for use with a 32-bit (x86) Excel version or a 64-bit (x64) Excel version.

### Software Requirements

Before you install SAP Interactive Excel, make sure that the following software programs are installed on your computer:

- Microsoft Excel 2010 or later
- Microsoft .NET Framework 4.0

You can download the installer from <http://www.microsoft.com/en-us/download/details.aspx?id=17718>.

- Microsoft Visual Studio 2010 Tools for Office Runtime, version 4.0

You can download the installer from <http://www.microsoft.com/en-us/download/details.aspx?id=39290>.

If the link is not available, for example, a new build of the tool has been released, in the Microsoft Download Center at <http://www.microsoft.com/en-us/download>, enter the search keywords **VSTO** and **2010** and then download the installer from a new location.

- SAP .Net Connector version 3.0

Check which version of Microsoft Windows your computer is running (32-bit or 64-bit) and download the appropriate installer version(s) of SAP .Net Connector at <http://service.sap.com/connectors> → SAP Connector for Microsoft .NET → Download SAP Connector for Microsoft .NET Version 3.0 → Compiled with .NET Framework 4.0

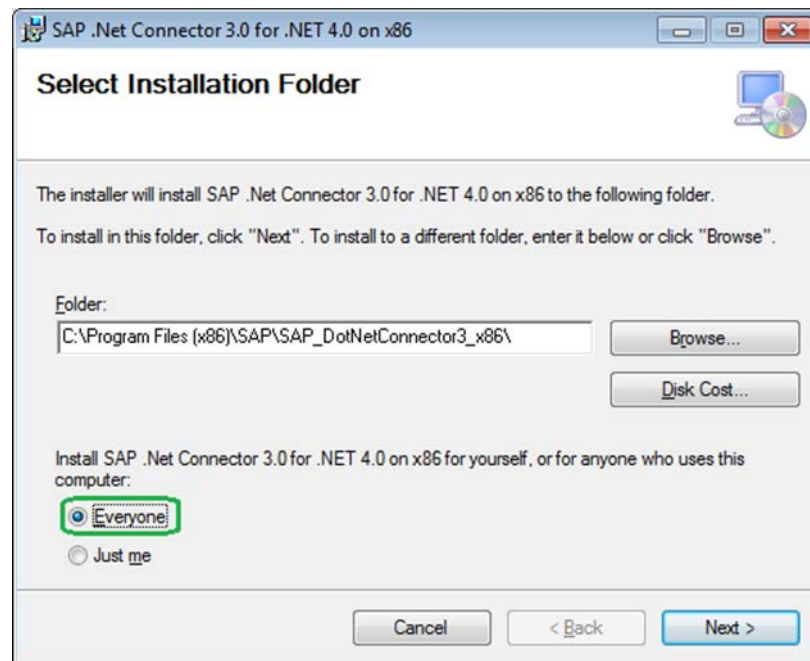
- For a 32-bit version operating system
  - SAP Connector for Microsoft .NET 3.0.12.0 for Windows 32bit (x86) or later
- For a 64-bit version operating system
  - SAP Connector for Microsoft .NET 3.0.12.0 for Windows 32bit (x86) or later
  - SAP Connector for Microsoft .NET 3.0.12.0 for Windows 64bit (x64) or later

It is possible that the version of SAP Connector will be newer than 3.0.12.0. In this case, download the latest version.



### Recommendation

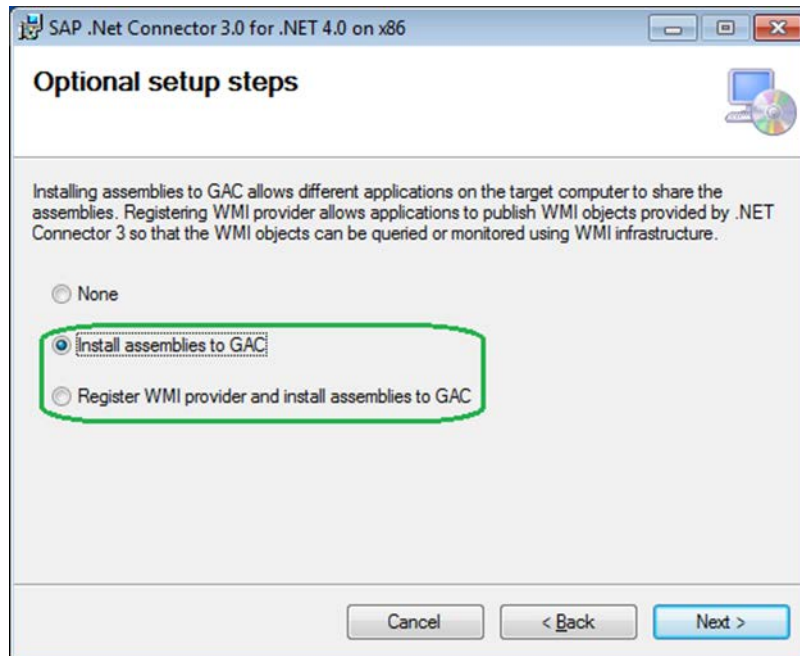
We recommend that you install SAP .Net Connector for all users who use the computer by selecting *Everyone*.





## Note

In the *Optional setup steps* step, you must specify whether you want to install SAP .Net Connector to GAC or to both GAC and WMI. If you select *None*, the installation of SAP Interactive Excel will fail.



## Information

- SAP Note 856863, *SAP NCo Release and Support Strategy*
- SAP Note 1844598, *SAP Interactive Excel 3.0*
- Read and follow the information in this documentation carefully.



### 3 Installing SAP Interactive Excel for EC-CS and SEM-BCS

1. Unpack the file with installation of SAP Interactive Excel to a local folder on the target computer.
2. From the folder, start the `SapAXLSetup.exe` file and follow the instructions displayed by the installer program.
  - o By default, the program is installed to one of the following folders:
    - o If Microsoft Office 64-bit version is installed: `%ProgramFiles%\SAP\AXL`
    - o If Microsoft Office 32-bit version is installed: `%ProgramFiles(x86)%\SAP\AXL`
  - o New items are created in the Windows *Start* menu → *All Programs* → *SAP Front End* → *SAP Interactive Excel 3.0*. A link to a loader of the SAP Interactive Excel workbook `SAPExcelWorkbook.xltn` is added.

#### Note

If any required software programs are not installed, the installation stops with a warning and will continue only after you have installed all required software packages on the target computer.

For information about the software requirements, see Prerequisites for First-Time Installation.

#### Note

If this is the first time that software is installed on the computer using `SAPSetup`, the following error might appear in the log after the installation:

```
Server Path C:\Program Files (x86)\SAP\SAPsetup\Setup could not be found: Error message: The system cannot find the file specified. Error code 0x00000002 (2).
```

This log entry indicates that the `SAPsetup` folder does not exist yet. By default, the `SAPsetup` folder is created during installation; therefore, you can ignore this error. The installation was successful.

3. Start SAP Interactive Excel from the Windows *Start* menu by clicking *All Programs* → *SAP Front End* → *SAP Interactive Excel 3.0*.

Microsoft Excel opens and an empty SAP Interactive Excel workbook is displayed. If a warning is displayed informing you about the possible danger of macros contained in the file, enable the content; otherwise, SAP Interactive Excel will not work.

#### Caution

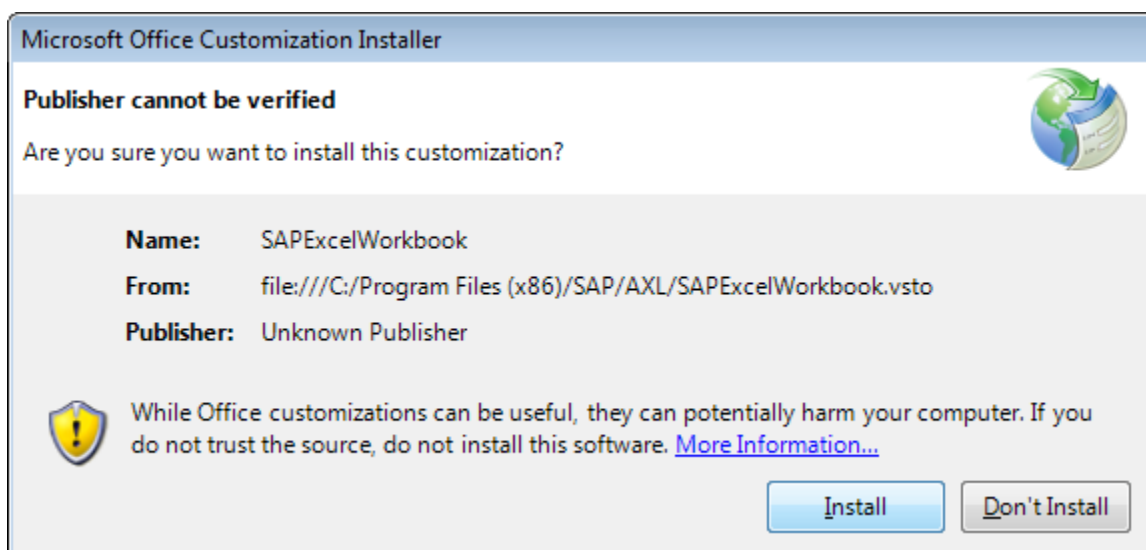
SAP delivers only digitally signed code. A digital signature proves that the code does not contain any dangerous malware. Always check the digital signature first.

## 4 Using SAP Interactive Excel for the First Time

The first time you start SAP Interactive Excel, it is important that you open the application as follows:

- From the Windows *Start* menu, select *All Programs* → *SAP Front End* → *SAP Interactive Excel 3.0*.

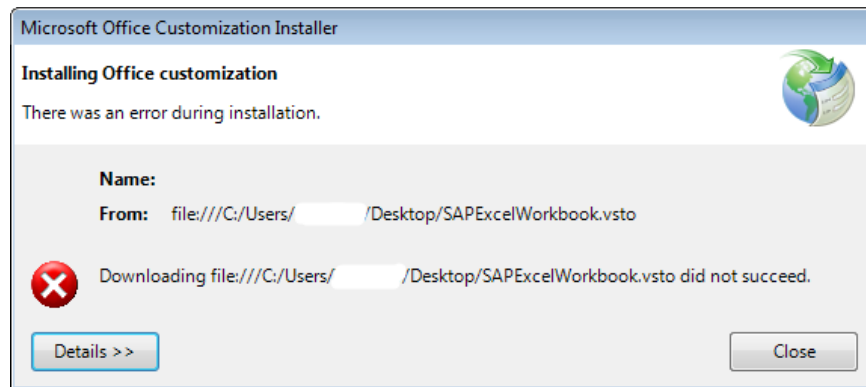
You must do this to ensure that the add-in application for Microsoft Excel is installed correctly for the current user. To do this, when the *Microsoft Office Customization Installer* dialog box appears, click *Install*.



Installing the add-in application for Microsoft Excel

### Caution

If you skip this step and execute a file that was previously created in SAP Interactive Excel or a file that was downloaded by another user, the following error message might appear and the add-in will not be installed correctly.



Error caused through incorrect installation

---

## 5 Uninstalling SAP Interactive Excel

After you install SAP Interactive Excel, the following entries are listed in the [Programs and Features](#) of Windows:

- SAP Interactive Excel  
This entry is created once for all users.
- SAPEXcelWorkbook  
This entry is created for each user who has used SAP Interactive Excel, that is, who has opened SAP Interactive Excel at least once from the Windows menu and installed the add-in as described in First-Time Use of SAP Interactive Excel.

To remove SAP Interactive Excel from a system completely, you must uninstall both components (entries) from the system.

---

## 6 Logging On to a System from SAP Interactive Excel

1. From the Windows [Start](#) menu, open the `SAPExcelWorkbook.xltn` file.  
Microsoft Excel opens.
2. Enable macros for the opened add-in.
3. On the Excel ribbon, click the [SAP Interactive Excel](#) tab and then click the [Logon](#) button.  
The [SAP Logon](#) dialog box opens.
4. Create a new logon entry by clicking the [New SAP System](#) toolbar button.
5. Configure the logon customizing settings for accessing backend systems manually on both the [User](#) and [Settings](#) tabs.  
You can apply the settings from the standard [SAP Logon](#) entry if it is available.

---

## 7 Creating Trace Files

If you have any issues with the SAP Interactive Excel, the support team may ask you to provide a trace file that records the steps you performed just before the issue occurred. To do this, you need to activate tracing by customizing in the `DebugForm` macro in SAP Interactive Excel.

### Activating Tracing

1. In Microsoft Excel, press `Alt+F8`, find the `DebugForm` form, and run this form.
2. Click [Log activities](#) and specify a path to the folder where you want the trace files to be created.  
The folder must be write-enabled.  
You can also customize tracing in the `<loggerSection>` part of the local configuration file: `%LOCALAPPDATA%\SAP\InteractiveExcel\3.0.0.0\SAPExcelWorkbook.config`
3. As soon as tracing is active, reproduce the exact steps that led to the issues.
4. Archive the files (`yyyymmdd_hhmmss_file.csv`) in the folder that has been customized in the `.config` file, typically folder `C:\log`.  
Always select the file with the most recent date and time in its name.
5. Archive the `yyyymmdd_hhmmss_file.trc` files in the same folder.

---

## 8 Default Configuration of SAP Interactive Excel EC-CS/SEM-BCS

The default configuration is installed in one of the following folders:

- If Microsoft Office 64-bit version is installed: %ProgramFiles%\SAP\AXL
- If Microsoft Office 32-bit version is installed: %ProgramFiles(x86)%\SAP\AXL

The configuration is copied to the user's local application folder the first time the application is used. If you require different customizing settings, we recommend that you modify the configuration files in this location.

### Configuration File

File location: %LOCALAPPDATA%\SAP\InteractiveExcel\3.0.0.0\SAPExcelWorkbook.config

The configuration file contains the following information:

- Location of generated event log
- Configuration of SAP .Net Connector
- All customized system connections
- List of relevant components in a backend system
- Global parameters



## 9 Security Information

SAP Interactive Excel uses the standard security settings of Microsoft Excel for the frontend application and the authorization concept of SAP ERP 6.0 for the backend system.

SAP Interactive Excel is dependent on SAP NetWeaver Applications Server. Therefore, the SAP NetWeaver Security Guide applies to Interactive Excel.

For more information, go to [http://help.sap.com/nw\\_platform](http://help.sap.com/nw_platform) and choose SAP NetWeaver <release> → Security Information → <your language>.

### Security and Protection

A workbook owner can lock a worksheet or a workbook by using the standard Microsoft Excel commands such as the *Protect Sheet* and *Protect Workbook* commands on the *Review* tab.



#### Caution

Be aware that Microsoft Excel does not encrypt data that is hidden or locked in a workbook. To protect confidential data, you can consider measures such as restricting access to workbooks that contain such information by storing them in a location that is available to authorized users only.

### Access Control

- SAP Interactive Excel is not delivered with any default user accounts or user roles.  
You must create and manage user accounts and roles in the backend system using the standard SAP authorization objects.
- All users must log on to a backend system using valid credentials.  
You must generate logon data (user ID and password) in the backend system for each user. The logon data is not stored in a file of SAP Interactive Excel.
- SAP Interactive Excel supports single sign-on (SSO).  
The prerequisite for SSO is that a Secure Network Communications (SNC) technology, such as SAP NetWeaver Single Sign-On based on SECUDE technology, which uses Kerberos or NT LAN Manager (NTLM) authentication, is available for logon to the backend system.
- Access to transactional and master data is fully controlled by the authorization rules defined in the backend system.  
You must manage authorization objects in the backend before productive use.
- SAP .Net Connector is used for communication between the frontend application and the backend system.

### Personal Data

SAP Interactive Excel is not designed for processing any sensitive personal data. No personal data is stored in any files of SAP Interactive Excel.

The %LOCALAPPDATA%\SAP\InteractiveExcel\3.0.0.0\ folder contains the local configuration file `SAPExcelWorkbook.config`. This file stores configuration data for a local user. No personal data is stored in this file.





[www.sap.com/contactsap](http://www.sap.com/contactsap)

© 2014 SAP AG. All rights reserved.

No part of this publication may be reproduced or transmitted in any form or for any purpose without the express permission of SAP AG. The information contained herein may be changed without prior notice.

Some software products marketed by SAP AG and its distributors contain proprietary software components of other software vendors.

Microsoft, Windows, Excel, Outlook, and PowerPoint are registered trademarks of Microsoft Corporation.

IBM, DB2, DB2 Universal Database, System ads, System i5, System p, System p5, System x, System z, System z10, System z9, z10, z9, iSeries, pSeries, xSeries, zSeries, eServer, z/VM, z/OS, i5/OS, S/390, OS/390, OS/400, AS/400, S/390 Parallel Enterprise Server, PowerVM, Power Architecture, POWER6+, POWER6, POWER5+, POWER5, POWER, OpenPower, PowerPC, BatchPipes, BladeCenter, System Storage, GPFS, HACMP, RETAIN, DB2 Connect, RACF, Redbooks, OS/2, Parallel Sysplex, MVS/ESA, AIX, Intelligent Miner, WebSphere, Netfinity, Tivoli and Informix are trademarks or registered trademarks of IBM Corporation.

Linux is the registered trademark of Linus Torvalds in the U.S. and other countries.

Adobe, the Adobe logo, Acrobat, PostScript, and Reader are either trademarks or registered trademarks of Adobe Systems Incorporated in the United States and/or other countries.

Oracle is a registered trademark of Oracle Corporation.

UNIX, X/Open, OSF/1, and Motif are registered trademarks of the Open Group.

Citrix, ICA, Program Neighborhood, MetaFrame, WinFrame, VideoFrame, and MultiWin are trademarks or registered trademarks of Citrix Systems, Inc.

HTML, XML, XHTML and W3C are trademarks or registered trademarks of W3C®, World Wide Web Consortium, Massachusetts Institute of Technology.

Java is a registered trademark of Sun Microsystems, Inc.

JavaScript is a registered trademark of Sun Microsystems, Inc., used under license for technology invented and implemented by Netscape.

SAP, R/3, xApps, xApp, SAP NetWeaver, Duet, PartnerEdge, ByDesign, SAP Business ByDesign, and other SAP products and services mentioned herein as well as their respective logos are trademarks or registered trademarks of SAP AG in Germany and in several other countries all over the world. All other product and service names mentioned are the trademarks of their respective companies. Data contained in this document serves informational purposes only. National product specifications may vary.

These materials are subject to change without notice. These materials are provided by SAP AG and its affiliated companies ("SAP Group") for informational purposes only, without representation or warranty of any kind, and SAP Group shall not be liable for errors or omissions with respect to the materials. The only warranties for SAP Group products and services are those that are set forth in the express warranty statements accompanying such products and services, if any. Nothing herein should be construed as constituting an additional warranty.